



Authentic Language through Place-Based Education

Dr. Rebecca Raine Raab
English Language Specialist

ENGLISH 
LANGUAGE 
PROGRAMS 

The World is Your Classroom



U.S. DEPARTMENT OF STATE

Welcome!

Where do you teach or work? (name of the community NOT the school)



Students, write your response!

Pear Deck Interactive Slide
Do not remove this bar

Do you currently live in the same community as your school or workplace?

A. Yes

B. No



“Culture has you before you have it.”

Jim Garrison

Today's objectives:

1. Identify components + principles of place-based education
2. Connect CLIL and languaging to place
3. Explore the 6 phases of *Place-Based Professional Learning*
4. Generate ideas for place-based education by reflecting on “place” and identifying opportunities in communities

[Link to Phase 1 Planning Document](#)





Place - a gateway to learning

“Memories of the places and events of our lives provide a dynamic form of insight...[and] present to consciousness the experiential, emotional, and intellectual content of life as it is directly known and felt” (Downing, 2003, p. 215).

What is Place-Based Education?

“Place-based education is the process of **using the local community and environment as a starting point to teach concepts in language arts, mathematics, social studies, science and other subjects across the curriculum**”
(Sobel, 2004).



<http://www.kohalacenter.org/teachertraining/pdf/pbexcerpt.pdf>

CLIL + Place

“To really understand content, our learners need to establish connections between new information and prior knowledge, relate new information to larger contexts, and understand its relevance **inside and outside** of the classroom” (Coyle et al., 2023).



Languaging + Place

- “...process of making meaning and shaping knowledge and experience through language” (Swain, 2006, p. 98)
- Collaborative dialogue where problem solving and knowledge building occur between participants (Swain & Watanabe, 2023)
- “...goal is to solve a complex problem using language to mediate the problem solution” (Swain & Watanabe, 2023, p. 1).



A blurred background image of a classroom. Several students are visible, with their hands raised in the air, suggesting an interactive or participatory activity. The focus is on the hands and arms, with the faces and bodies of the students being out of focus. The lighting is soft and indoor, typical of a school setting.

Languageing only in
school = not enough

Intersection of Place & CLIL

Place-Based

Community as learning ecosystems
(Vander Ark, Liebttag, & McClennen, 2020)



Pluriliteracies for Teaching Deeper Learning

“Deeper Learning develops within deep learning ecologies and learnscapes”
(Coyle et al., 2023)

- Deeper Learning Ecologies include partnerships between teachers and learners
- Learnscapes = where interactive learning occurs

Place-Based Education Principles

(Vander Ark, et al., 2020)

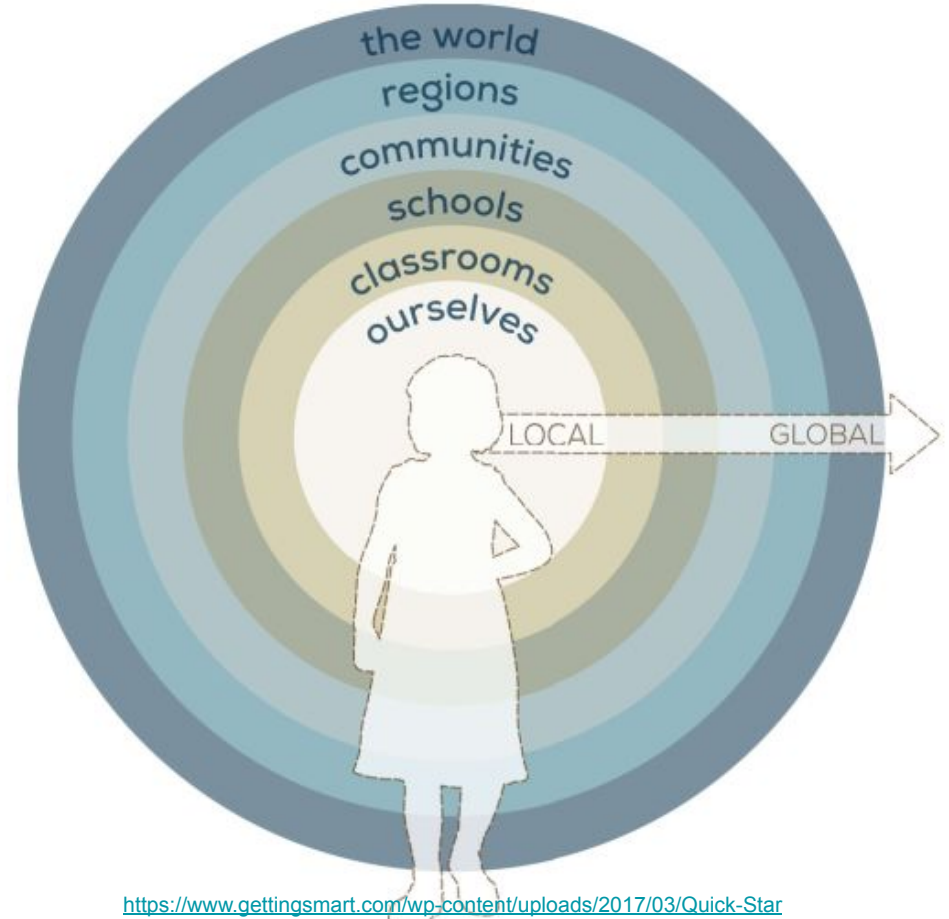
1. Community as Classroom
2. Learner-Centered
3. Inquiry-Based
4. Local to Global
5. Design Thinking
6. Interdisciplinary (Plurilingual)




Local to Global

“I think we don’t know ourselves until we know the world around us and how we connect to that world”

Laura Hasplea, educator





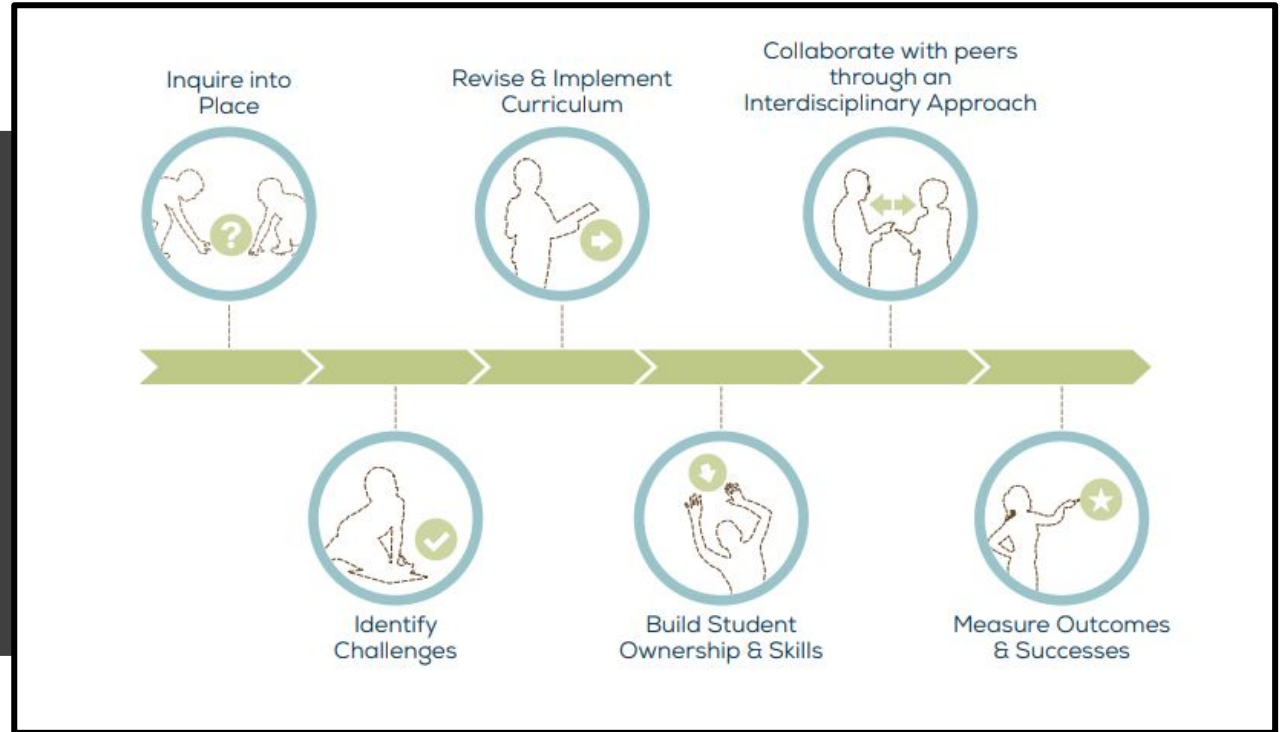
Place-Based Education Themes

- Cultural studies
 - Nature studies
 - Real world problem solving
 - Internships and entrepreneurial opportunities
 - Induction into community processes
- 

Smith (2002)

Six Phases of Place-Based Professional Learning

(Vander Ark, et al., 2020)



<https://www.gettingsmart.com/wp-content/uploads/2017/03/Quick-Start-Guide-to-Place-Based-Professional-Learning.pdf>

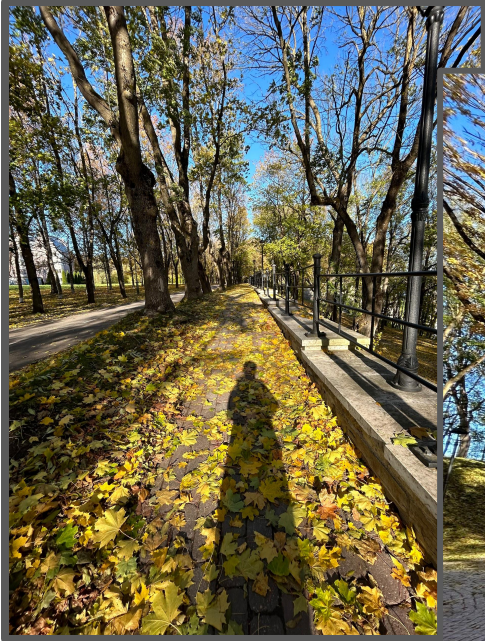
Phase 1 Place-Based Professional Learning

Inquire into Place



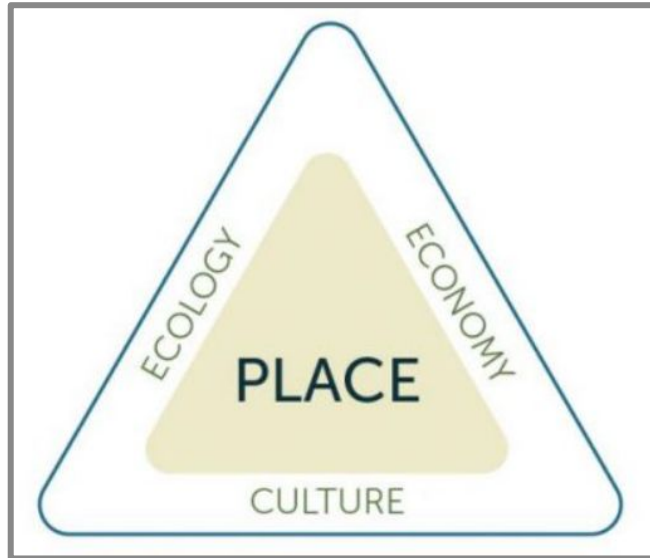
Activity 1

re(Discovering) Your Personal Connection to Place



Activity 2 Part 1

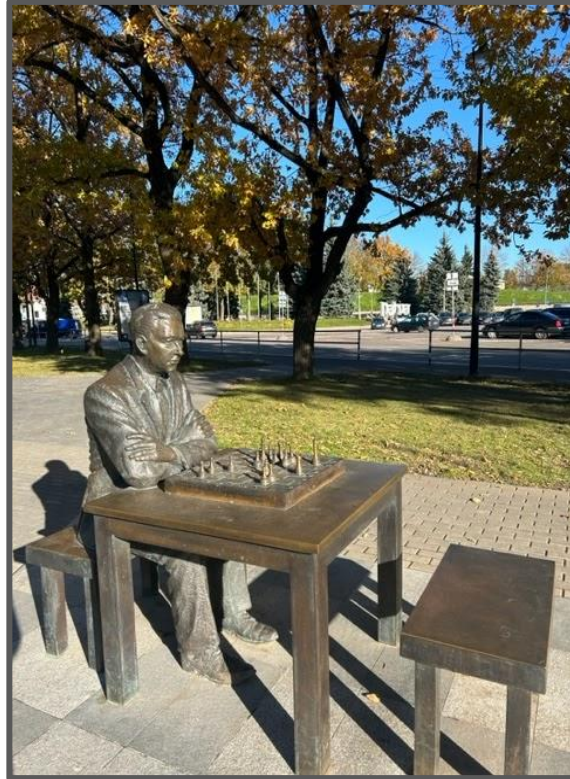
Initial Community + Network Mapping



<https://www.tetonscience.org/about/place-based-education/>

Activity 2 Part 2

Community Strengths Mapping





Sailboat on the Narva River

Want More Information?

**Want Help Brainstorming
Ideas about Place-Based
Education & CLIL?**

Contact Rebecca

rebecca.raine@gmail.com

rebecca@seachange101.com

References

Getting Smart. (2023). *Power of place*. <https://www.gettingsmart.com/series/power-of-place/#pro-pbe>

Guides for Educators:

1. What is Place-Based Education and Why Does it Matter:
<https://www.gettingsmart.com/wp-content/uploads/2017/02/What-is-Place-Based-Education-and-Why-Does-it-Matter.pdf>
2. Quick Start Guide to Implementing Place-Based Education:
<https://www.tetonscience.org/wp-content/uploads/2018/10/guide-to-implementing-place-based-education.pdf>
3. Quick Start Guide to Place-Based Professional Learning:
<https://www.gettingsmart.com/wp-content/uploads/2017/03/Quick-Start-Guide-to-Place-Based-Professional-Learning.pdf>

Smith, G.A. (2002). Place-based education: Learning to be where we are. *Phi Delta Kappan*, 83(8), 584-594.

Teton Science Schools. (2023). <https://www.tetonscience.org/about/place-based-education/>

Vander Ark, T., Liebttag, E., & McClennen, N. (2020). *The power of place: authentic learning through place-based education*. Association for Supervision and Curriculum Development (ASCD).

Swain & Watanabe (2013)

<https://dcdc.coe.hawaii.edu/ltec/612/wp-content/uploads/2014/07/Communicative-Language-Teaching.pdf>